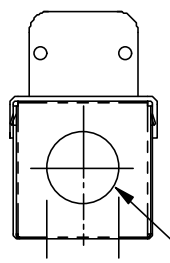


FIXTURE MAY BE INSTALLED ON ANY ANGLE



END VIEW

1/2" CONDUIT INLET, BOTH ENDS

X	Check Appropriate Box		
Fixture	P/N	Length	
115 Vac	10001100	As Shown	
208/230	10001200	As Shown	

NOTES:

1. UNIT SHIPPED WITH LAMP INSTALLED (DO NOT TOUCH GLASS)
2. REPLACEMENT UVC EMITTER, MODEL GTD 34 VO, PART NO. 20000400
3. CONSTRUCTED OF HOSPITAL GRADE STAINLESS STEEL & SPECULAR ALUMINUM
4. PRE-PUNCHED MOUNTING HOLES, USE #10 SCREWS, 4 REQD
5. INSTALLED WEIGHT 3.2 LBS.
6. ELECTRICAL REQUIREMENTS: 50/60 HZ - 85 WATTS
7. USE INTERLOCK ON ACCESS DOOR
8. UL & CSA LISTED

CAUTION PROTECT EYES AND SKIN - TURN UNITS OFF FOR SERVICE

A	4/18 01	FIRST ISSUE	RMC
REV DATE		DFT	
NEXT ASS'Y			WT.
SALES DRAWING 36" DOUBLE ENDED FIXTURE & EMITTER MODEL DE 361 VO			
DRAWING NO. 0104181		REV. A	

