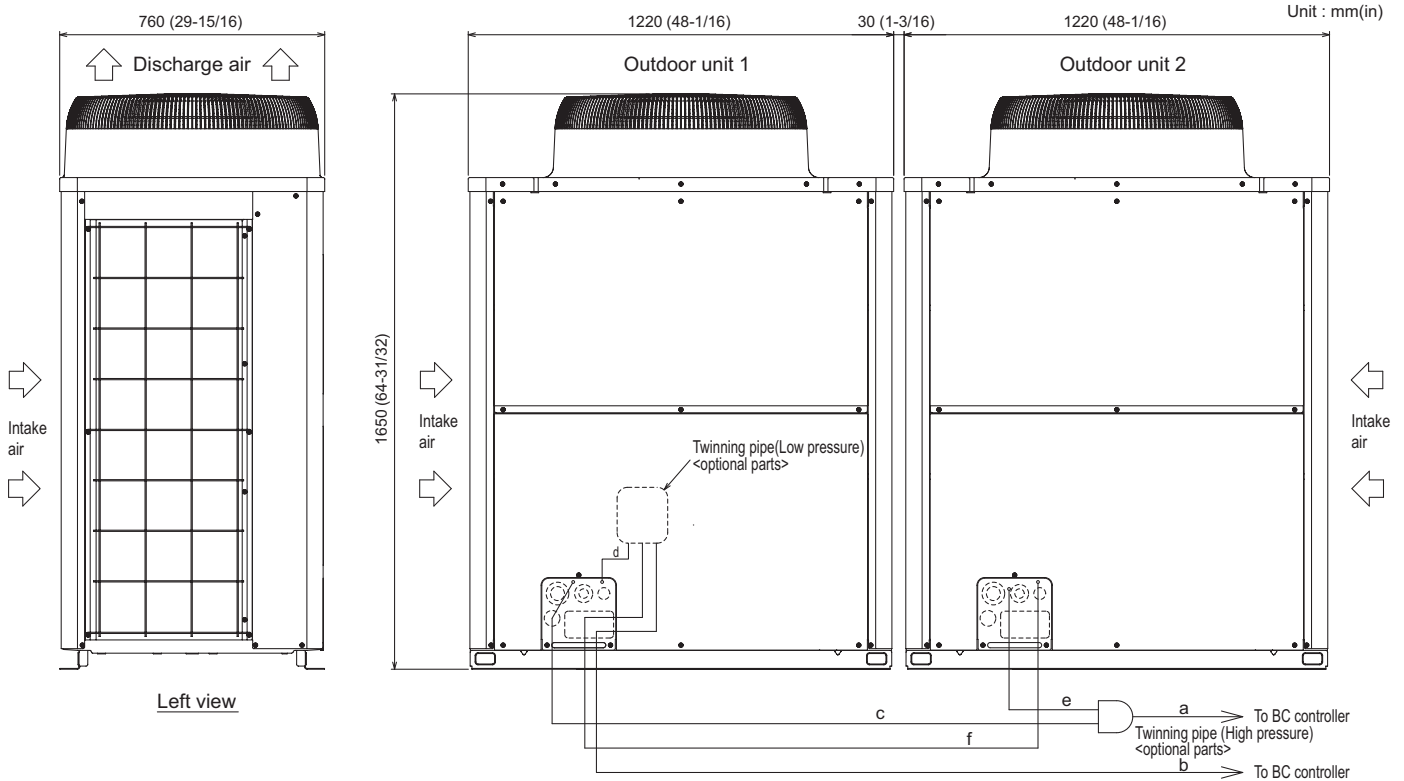


# Outdoor Unit: PURY-P240TSHMU-A – DIMENSIONS



Left view

Front view

**Twinning pipe connection size**

Package unit name		PURY-P192TSHMU-A(-BS)	PURY-P216TSHMU-A(-BS)	PURY-P240TSHMU-A(-BS)
Component unit name	Outdoor unit 1	PURY-P96THMU-A(-BS)	PURY-P120THMU-A(-BS)	PURY-P120THMU-A(-BS)
	Outdoor unit 2	PURY-P96THMU-A(-BS)	PURY-P96THMU-A(-BS)	PURY-P120THMU-A(-BS)
Outdoor Twinning Kit(optional parts)		CMY-R100VBK		
BC controller ~ Twinning pipe	High pressure	a	ø28.58(1-1/8)	
	Low pressure	b	ø28.58(1-1/8)	

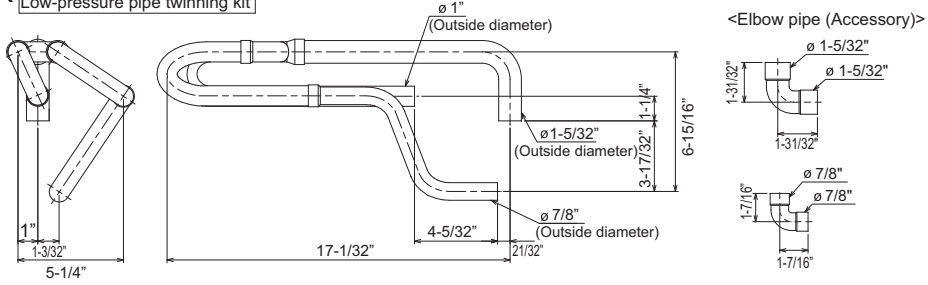
Twinning pipe - Outdoor unit	Unit model	High pressure	Low pressure
		c or e	d or f
	P96	ø19.05(3/4)	ø22.2(7/8)
	P120	ø19.05(3/4)	ø28.58(1-1/8)

- Note 1. Connect the pipes as shown in the figure above. Refer to the table above for the pipe size.  
 2. Twinning pipe (high pressure) should not have a side-to-side angle of more than 15 degrees.  
 3. Refer to the Installation Manual for details of the Twinning pipe installation.  
 4. The straight length of piping before the Twinning pipe (section "a" in the figure) must be at least 500mm(19-11/16) (\*including the straight pipe supplied with the Twinning pipe).  
 5. Use only the Twinning pipes manufactured by Mitsubishi (optional parts).

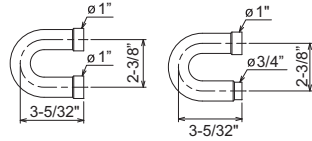
# Twinning Kit: CMY-R100VBK

## CMY-R100VBK

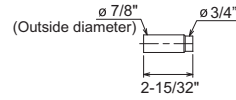
Low-pressure pipe twinning kit



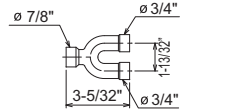
<Low-pressure pipe twinning kit (Accessory)>



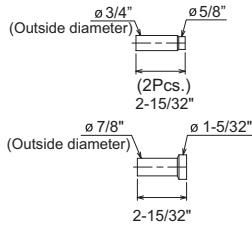
<Reducer pipe (Accessory)>



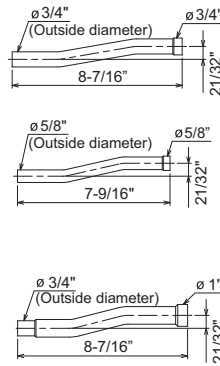
High-pressure twinning pipe



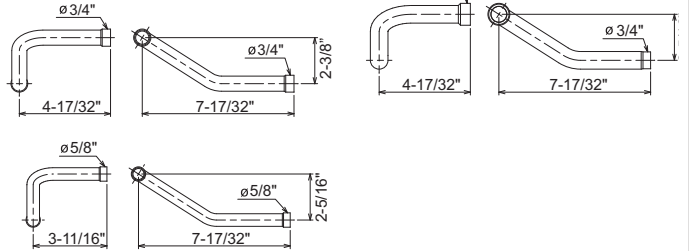
<Reducer pipe (Accessory)>



<Pipe for routing through the bottom (Accessory)>

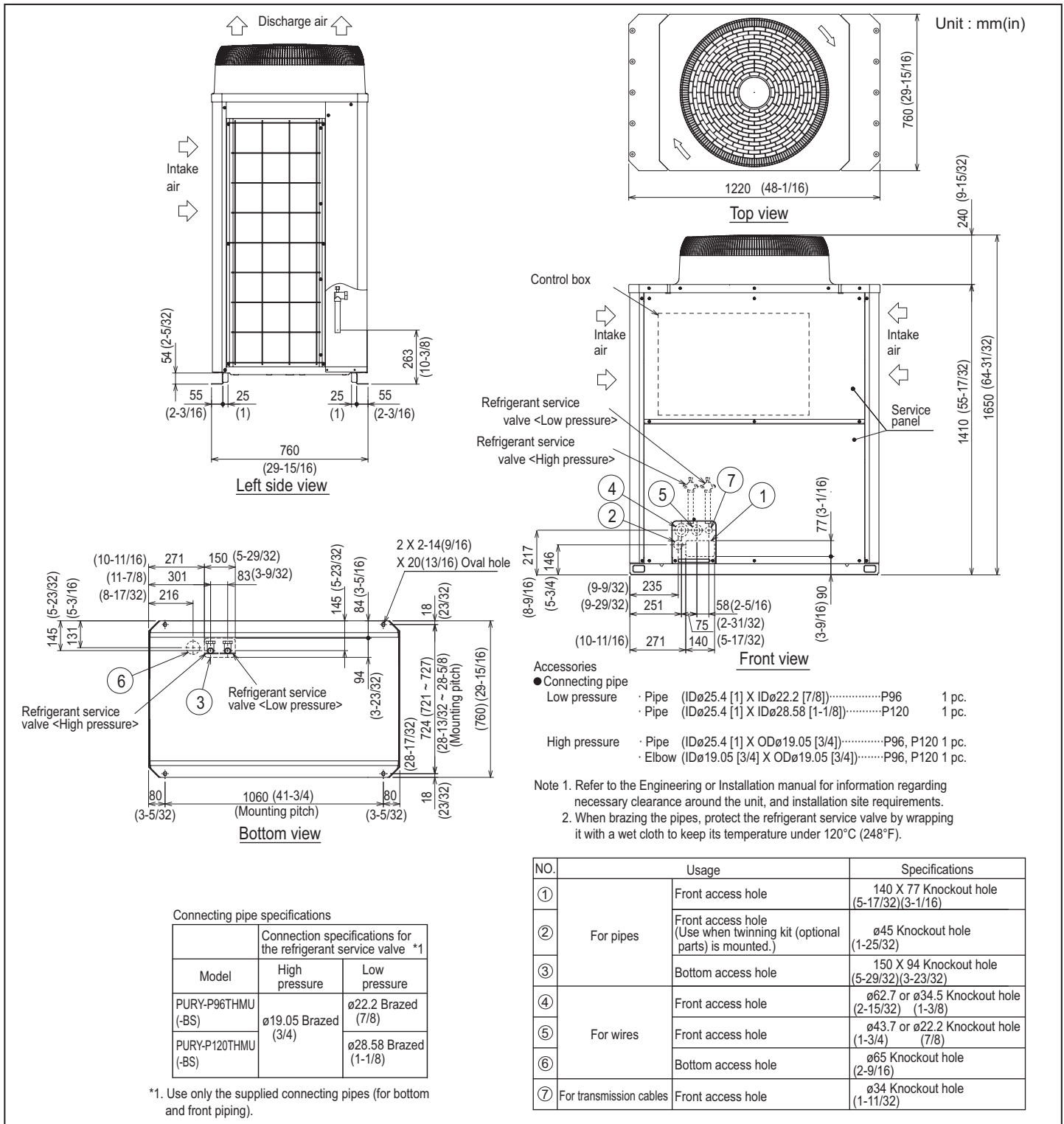


<Pipe for routing through the front (Accessory)>



For instructions on piping the units together using the twinning kit, see the Installation Manual.

# Modules 1 and 2: PURY-P120THMU-A – DIMENSIONS



### Connecting pipe specifications

Model	Connection specifications for the refrigerant service valve *1	
	High pressure	Low pressure
PURY-P96THMU (-BS)	ø19.05 Brazed (3/4)	ø22.2 Brazed (7/8)
PURY-P120THMU (-BS)		ø28.58 Brazed (1-1/8)

\*1. Use only the supplied connecting pipes (for bottom and front piping).

NO.	Usage	Specifications
①	Front access hole	140 X 77 Knockout hole (5-17/32)(3-1/16)
②	For pipes	Front access hole (Use when twinning kit (optional parts) is mounted.) ø45 Knockout hole (1-25/32)
③	Bottom access hole	150 X 94 Knockout hole (5-29/32)(3-23/32)
④	Front access hole	ø62.7 or ø34.5 Knockout hole (2-15/32) (1-3/8)
⑤	For wires	Front access hole ø43.7 or ø22.2 Knockout hole (1-3/4) (7/8)
⑥	Bottom access hole	ø65 Knockout hole (2-9/16)
⑦	For transmission cables	Front access hole ø34 Knockout hole (1-11/32)



Mitsubishi Electric Air Conditioning & Refrigeration Systems Works acquired ISO 9001 certification under Series 9000 of the International Standard Organization (ISO) based on a review of quality warranties for the production of refrigeration and air conditioning equipment.

ISO Authorization System  
 The ISO 9000 series is a plant authorization system relating to quality warranties as stipulated by the ISO. ISO 9001 certifies quality warranties based on the "design, development, production, installation and auxiliary services" for products built at an authorized plant.



**HVAC Advanced Products Division**  
 Mitsubishi Electric & Electronics USA, Inc.

3400 Lawrenceville Suwanee Rd.  
 Suwanee, GA 30024  
 Tele: 678-376-2900 • Fax: 800-889-9904  
 Toll Free: 800-433-4822 (#4)  
 www.mehvac.com

Specifications are subject to change without notice.



Mitsubishi Electric Air Conditioning & Refrigeration Systems Works acquired environmental management system standard ISO 14001 certification.

The ISO 14000 series is a set of standards applying to environmental protection set by the International Standard Organization (ISO).

Certificate Number EC97J1227