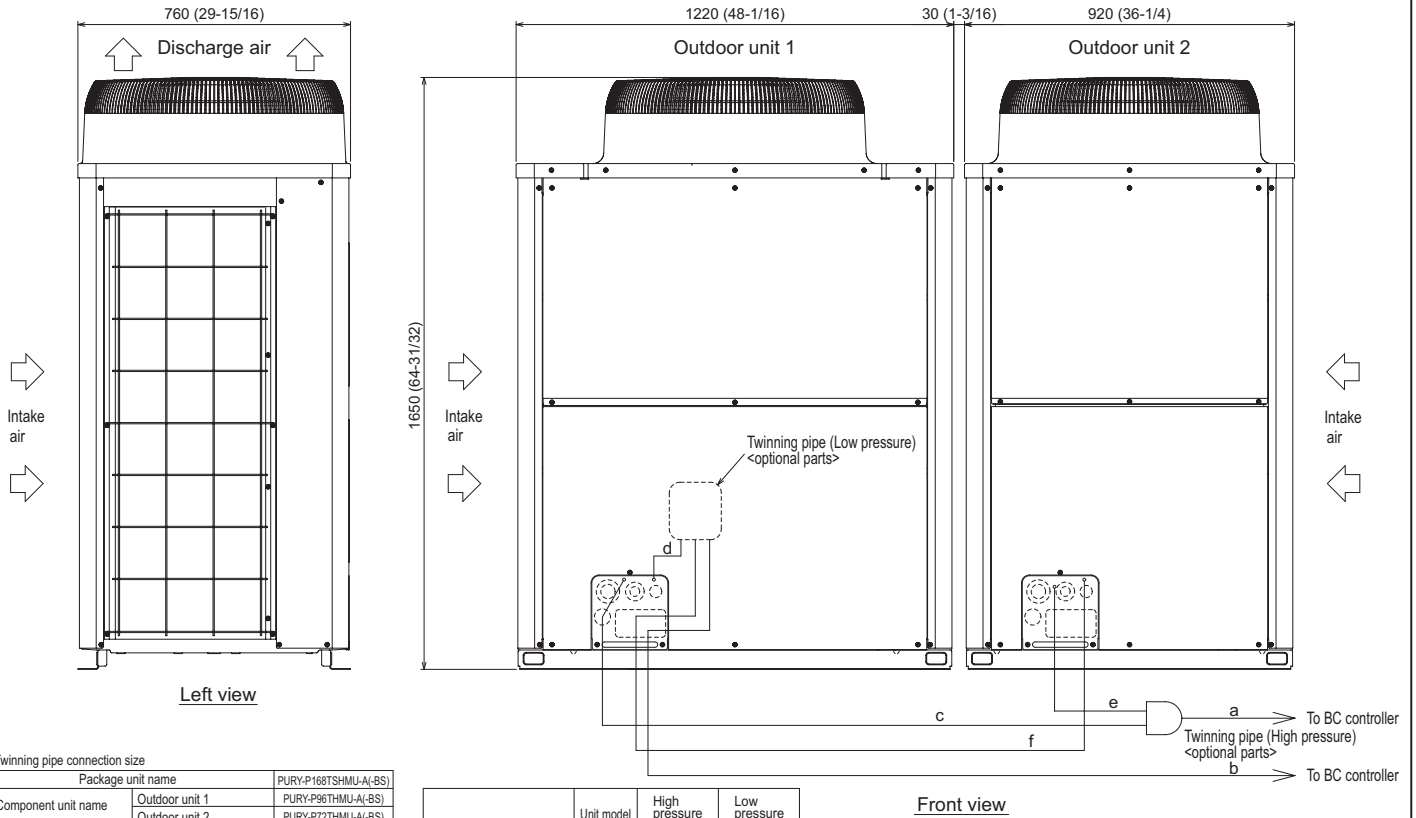


# Outdoor Unit: PURY-P168TSHMU-A – DIMENSIONS

Unit : mm(in)



Twinning pipe connection size

| Package unit name                     |                | PURY-P168TSHMU-A(-BS) |                |
|---------------------------------------|----------------|-----------------------|----------------|
| Component unit name                   | Outdoor unit 1 | PURY-P96THMU-A(-BS)   |                |
|                                       | Outdoor unit 2 | PURY-P72THMU-A(-BS)   |                |
| Outdoor Twinning Kit (optional parts) |                | CMY-R100VBK           |                |
| BC controller - Twinning pipe         | High pressure  | a                     | ø22.2 (7/8)    |
|                                       | Low pressure   | b                     | ø28.58 (1-1/8) |

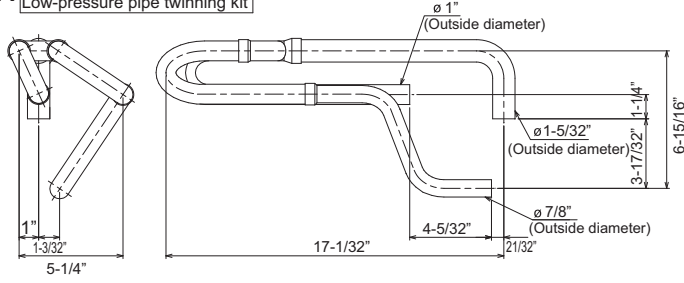
| Twinning pipe - Outdoor unit | Unit model | High pressure | Low pressure |
|------------------------------|------------|---------------|--------------|
|                              |            | c or e        | d or f       |
|                              | P72        | ø15.88 (5/8)  | ø19.05 (3/4) |
|                              | P96        | ø19.05 (3/4)  | ø22.2 (7/8)  |

- Note 1. Connect the pipes as shown in the figure above. Refer to the table above for the pipe size.  
 2. Twinning pipe (High pressure) should not have a side-to-side angle of more than 15 degrees.  
 3. Refer to the Installation Manual for details of the Twinning pipe installation.  
 4. The straight length of piping before the Twinning pipe (section "a" in the figure) must be at least 500mm (19-11/16) (\*including the straight pipe supplied with the Twinning pipe).  
 5. Use only the Twinning pipes manufactured by Mitsubishi (optional parts).

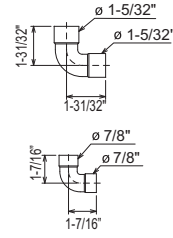
# Twinning Kit: CMY-R100VBK

## CMY-R100VBK

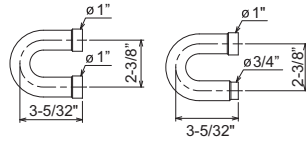
### Low-pressure pipe twinning kit



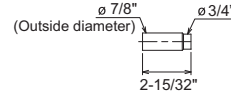
### <Elbow pipe (Accessory)>



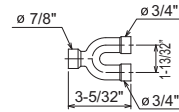
### <Low-pressure pipe twinning kit (Accessory)>



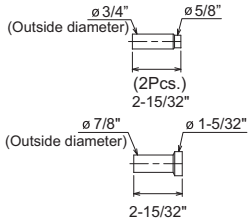
### <Reducer pipe (Accessory)>



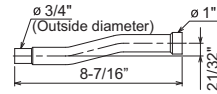
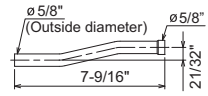
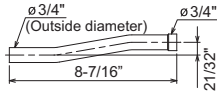
### High-pressure twinning pipe



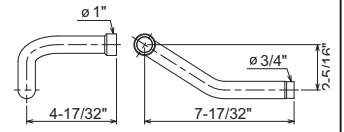
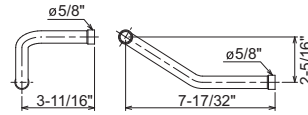
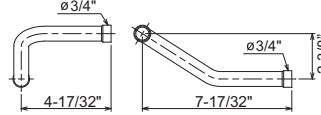
### <Reducer pipe (Accessory)>



### <Pipe for routing through the bottom (Accessory)>

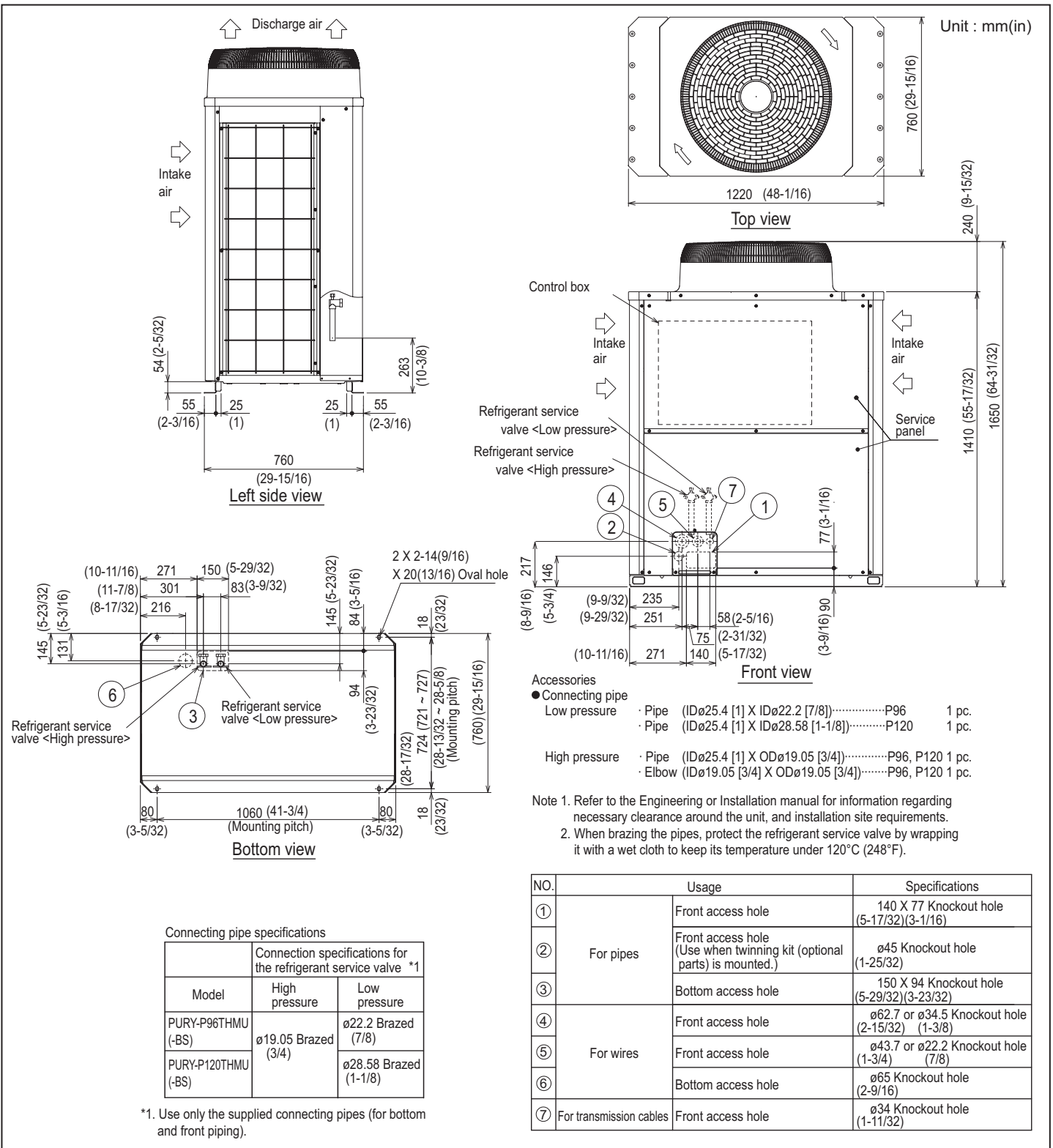


### <Pipe for routing through the front (Accessory)>

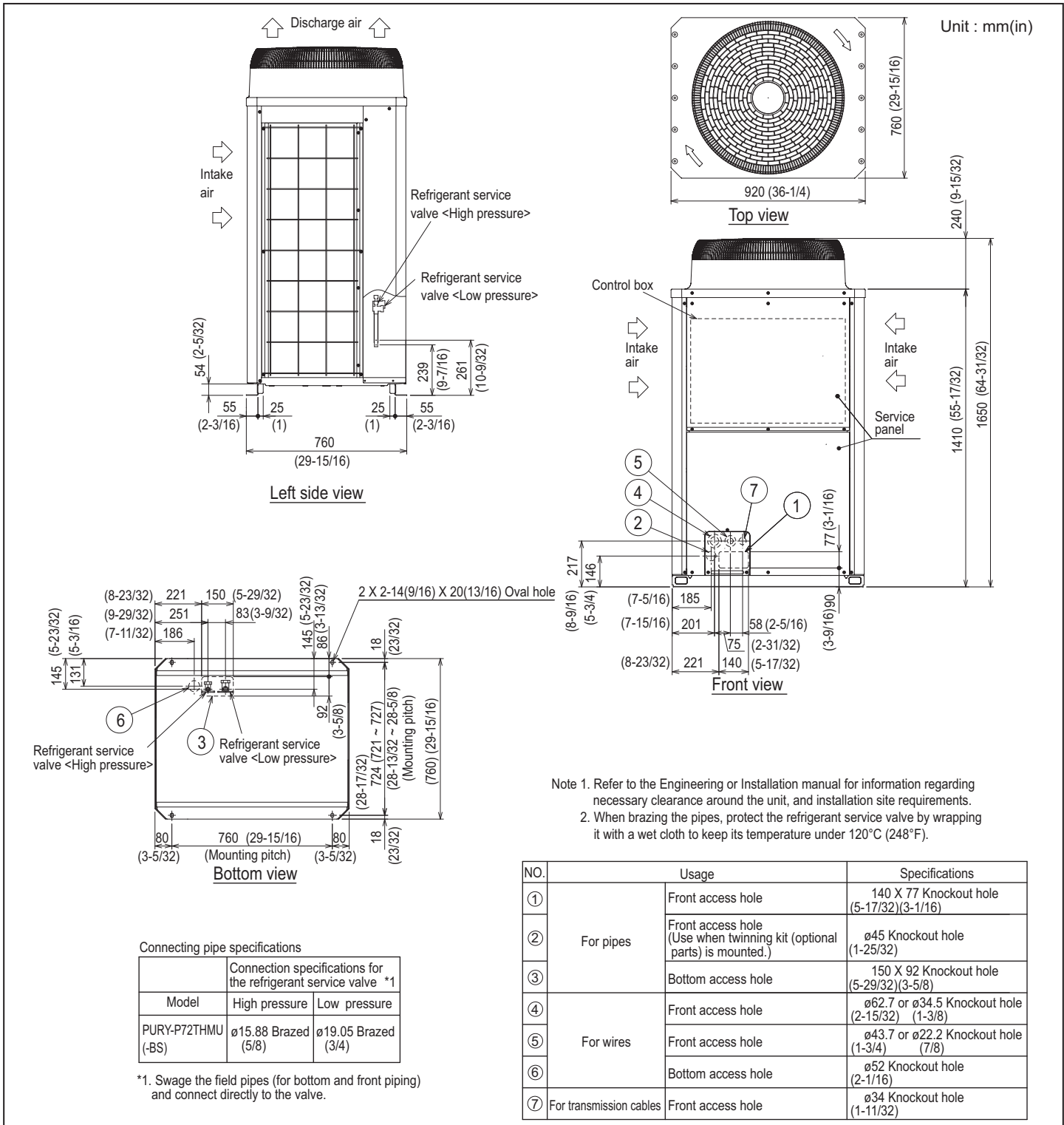


For instructions on piping the units together using the twinning kit, see the Installation Manual.

# Module 1: PURY-P96THMU-A – DIMENSIONS



# Module 2: PURY-P72THMU-A – DIMENSIONS



Certificate Number FM33568

Mitsubishi Electric Air Conditioning & Refrigeration Systems Works acquired ISO 9001 certification under Series 9000 of the International Standard Organization (ISO) based on a review of quality warranties for the production of refrigeration and air conditioning equipment.

ISO Authorization System  
The ISO 9000 series is a plant authorization system relating to quality warranties as stipulated by the ISO. ISO 9001 certifies quality warranties based on the "design, development, production, installation and auxiliary services" for products built at an authorized plant.



Mitsubishi Electric Air Conditioning & Refrigeration Systems Works acquired environmental management system standard ISO 14001 certification.

The ISO 14000 series is a set of standards applying to environmental protection set by the International Standard Organization (ISO).

Certificate Number EC97J1227

C SD - PURY-P168TSHMU-A - 1 - 200809 © MITSUBISHI ELECTRIC / HVAC 2008



**HVAC Advanced Products Division**  
Mitsubishi Electric & Electronics USA, Inc.

3400 Lawrenceville Suwanee Rd.  
Suwanee, GA 30024  
Tele: 678-376-2900 • Fax: 800-889-9904  
Toll Free: 800-433-4822 (#4)  
www.mehvac.com

Specifications are subject to change without notice.