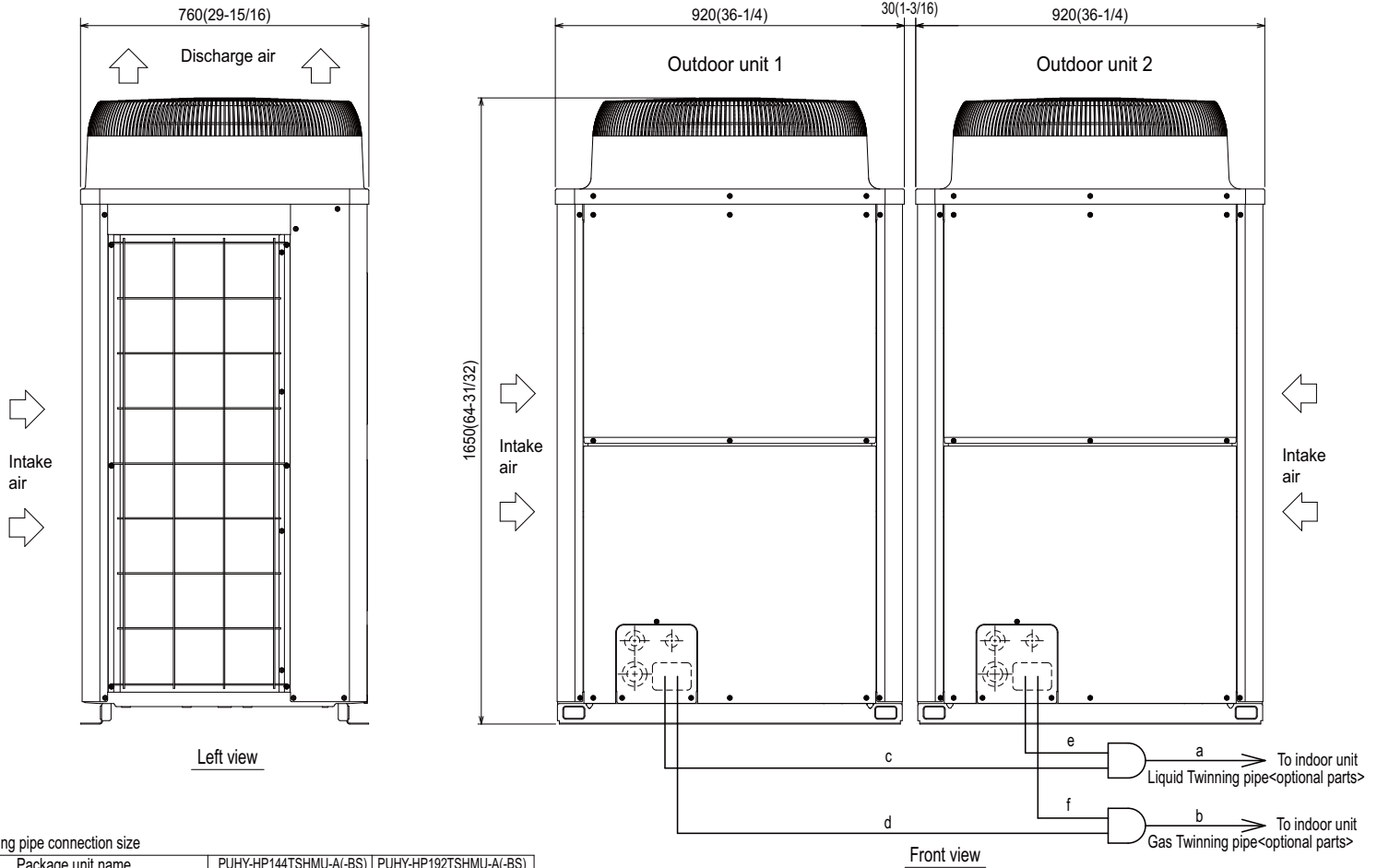


Module Set: PUHY-HP192TSHMU-A – DIMENSIONS



Twinning pipe connection size

Package unit name	PUHY-HP144TSHMU-A(-BS)	PUHY-HP192TSHMU-A(-BS)
Component unit name	Outdoor unit 1 Outdoor unit 2	PUHY-HP72THMU-A(-BS) PUHY-HP96THMU-A(-BS)
Outdoor Twinning Kit(optional parts)	CMY-Y100VBK2	
Indoor unit ~ Twinning pipe	Liquid a	ø 15.88(5/8)
	Gas b	ø 28.58(1-1/8)

Twinning pipe~Outdoor unit	Unit model	Liquid	Gas
		c or e	d or f
	P72	ø 9.52(3/8)	19.05(3/4)
	P96	ø 9.52(3/8)	22.2(7/8)

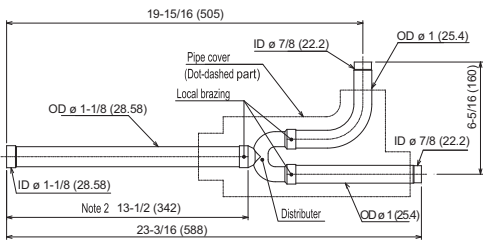
Note 1. Connect the pipes as shown in the figure above. Refer to the table above for the pipe size.

2. Twinning pipes should not be tilted more than 15 degrees from the ground. See the Installation Manual for details.

Unit : mm(in)

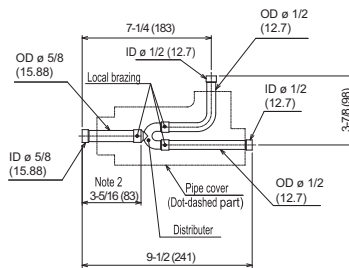
CMY-Y100VBK2

For Gas pipe:



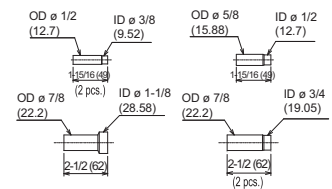
ID: Inner Diameter OD: Outer Diameter

For Liquid pipe:

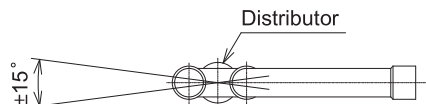


Ref.: CMY_Y100VBK2_EXD_EUDB_SI
Inches (mm)

<Reducer Pipe (Accessory)>



Note 1. Reference the angle of the branch pipe below the fig.



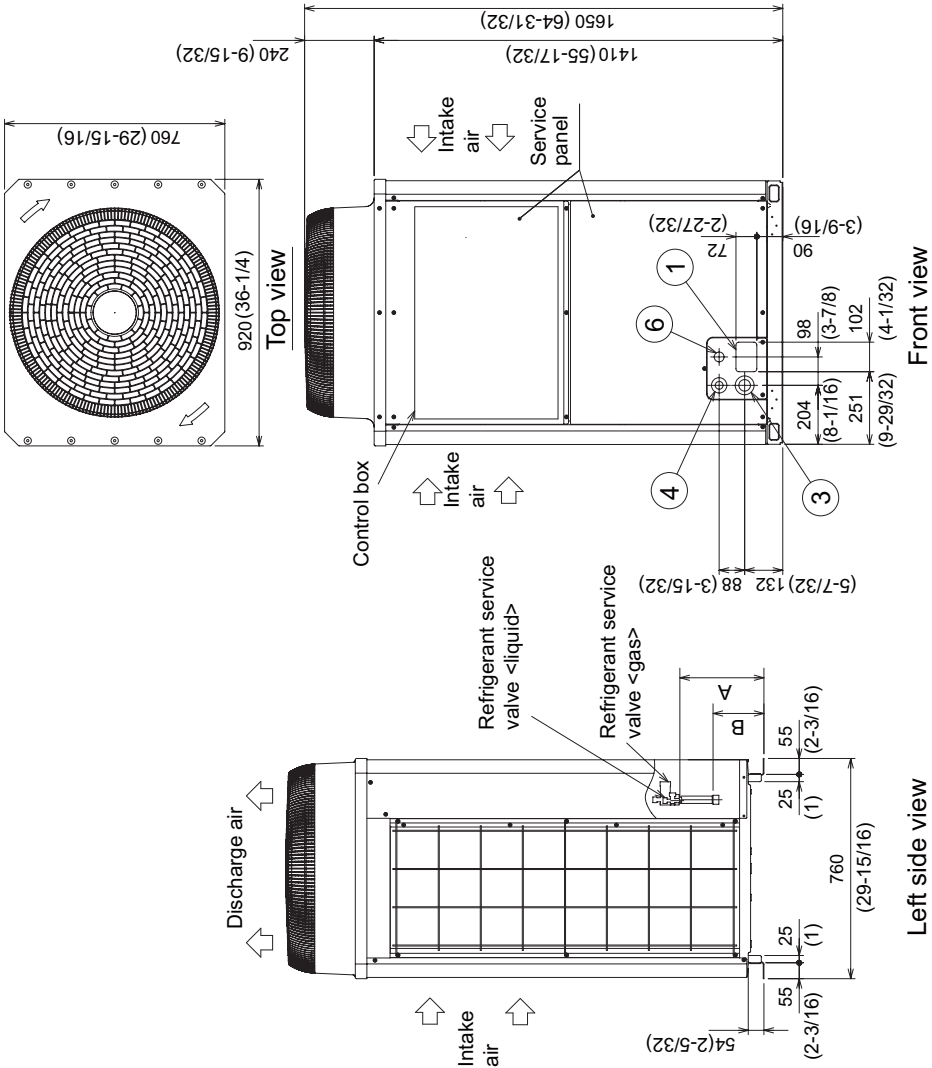
The angle of the branch pipe is within $\pm 15^\circ$ against the ground.

2. Use the attached pipe to braze the port-opening of the distributor.
3. Pipe diameter is indicated by inside diameter.

For instructions on piping the units together using the twinning kit, see the Installation Manual.

Outdoor Units 1 and 2: PUHY-HP96THMU-A – DIMENSIONS

Unit : mm(in)

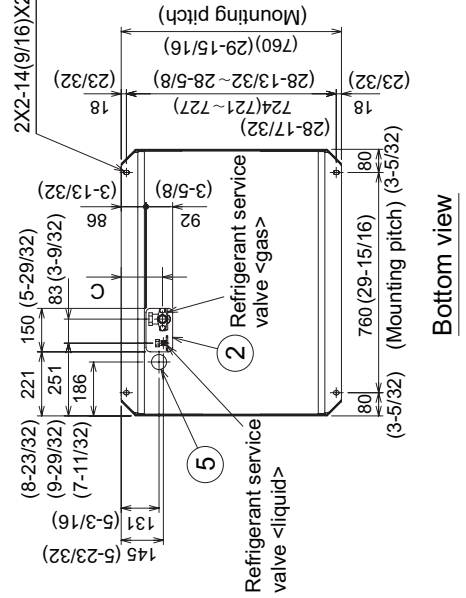


- <Accessories> (Supplied only with the unit listed below)
- Connecting pipe <gas> 1 pc.
 - PUHY-HP72THMU Models Packaged with other accessories
 - PUHY-HP96THMU Models Mounted on the refrigerant service valve
 - Connecting pipe <liquid> 1 pc.
 - PUHY-HP72.96THMU Models Packaged with other accessories (For standalone use)
 - Packing for connecting pipe <gas> 1 pc.
 - Mounted adjacent to the refrigerant service valve on the gas side
 - PUHY-HP72.96THMU Models

Note. Refer to the Installation Manual for information regarding necessary clearance around the unit and foundation.

NO.	Usage	Specifications
①	For pipes	102 X 72 Access hole (4-1/32) (2-27/30)
②		150 X 92 Access hole (5-29/32) (3-5/8)
③		Ø 65 or Ø 40 Access hole (2-9/16) (1-19/32)
④		Ø 52 or Ø 27 Access hole (2-1/16) (1-3/32)
⑤		Ø 52 Access hole (2-1/16)
⑥		Ø 34 Access hole (1-11/32)

2X2-14(9/16)X20(13/16) Oval hole



Connecting pipe specifications

Model	Position dimensions for the refrigerant service valve			Connection specifications for the refrigerant service valve	
	Liquid	Gas	C	Liquid	Gas
PUHY-HP72THMU	290 (11-7/16)	161 (6-11/32)	145 (5-23/32)	Multiple unit installation (3/8)	Ø19.05 Braze (3/4)
PUHY-HP96THMU	(242)*2 (9-17/32)	165 (6-1/2)	142 (5-19/32)	(Single unit installation) (1/2)	Ø22.2 Braze (7/8)

*1 Indicates the dimensions for use with the pipe that is supplied.
 *2 Indicates dimensions and connection specifications appropriate to installing the unit as a single unit.

NOTES



Certificate Number FM33568

Mitsubishi Electric Air Conditioning & Refrigeration Systems Works ac 9001 certification under Series 9000 of the International Standard Orgs based on a review of quality warranties for the production of refrigerat conditioning equipment.

ISO Authorization System

The ISO 9000 series is a plant authorization system relating to quality stipulated by the ISO. ISO 9001 certifies quality warranties based on th development, production, installation and auxiliary services* for produ an authorized plant.



Mitsubishi Electric Air Conditioning & Refrigeration Systems Works acquired environmenta management system standard ISO 14001 certification.

The ISO 14000 series is a set of standards applying to environmental protection set by the International Standard Organization (ISO).

Certificate Number EC97J1227

C SD - PUHY-HP192TSHMU-A - 1 - 200712 © MITSUBISHI ELECTRIC / HVAC 2007



HVAC Advanced Products Division
Mitsubishi Electric & Electronics USA, Inc.

3400 Lawrenceville Suwanee Rd.
Suwanee, GA 30024

Tele: 678-376-2900 • Fax: 800-889-9904

Toll Free: 800-433-4822 (#4)

www.mehvac.com

Specifications are subject to change without notice.