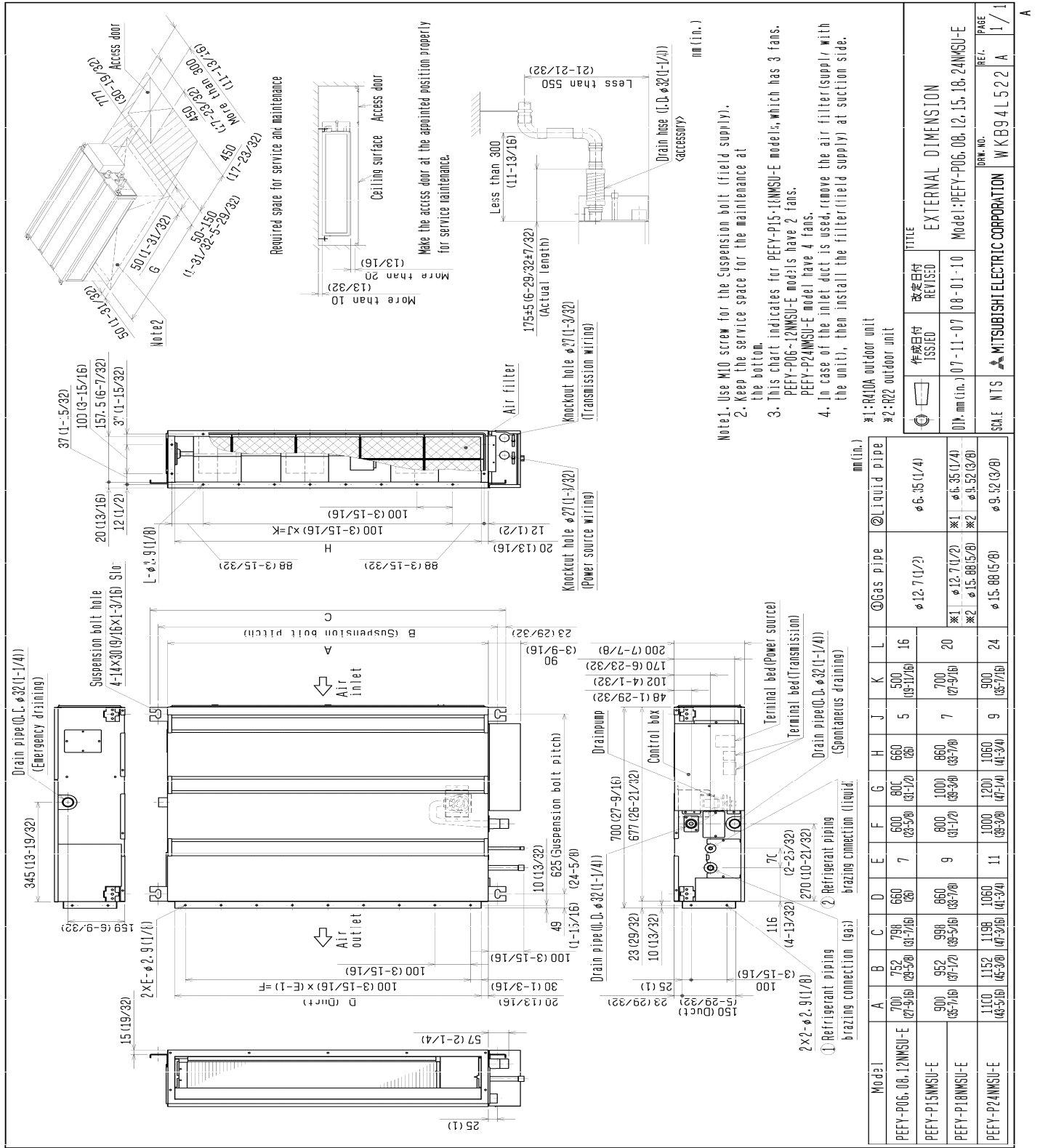


# Model: PEFY-P06NMSU-E - DIMENSIONS



- Note 1. Use M10 screw for the Suspension bolt (field supply).  
 Note 2. Keep the service space for the maintenance at the bottom.  
 Note 3. This chart indicates for PEFY-P15.12NMSU-E models, which has 3 fans. PEFY-P06.12NMSU-E models have 2 fans. PEFY-P24NMSU-E model have 4 fans.  
 Note 4. In case of the inlet duct is used, remove the air filter(supply) with the unit, then install the filter(field supply) at suction side.



Mitsubishi Electric Air Conditioning & Refrigeration Systems Works acquired ISO 9001 certification under Series 9000 of the International Standard Organization (ISO) based on a review of quality warranties for the production of refrigeration and air conditioning equipment.

**ISO Authorization System**  
 The ISO 9000 series is a plant authorization system relating to quality warranties as stipulated by the ISO. ISO 9001 certifies quality warranties based on the "design, development, production, installation and auxiliary services" for products built at an authorized plant.



Mitsubishi Electric Air Conditioning & Refrigeration Systems Works acquired environmental management system standard ISO 14001 certification.

The ISO 14000 series is a set of standards applying to environmental protection set by the International Standard Organization (ISO).



**MITSUBISHI ELECTRIC**  
 HVAC Advanced Products Division  
 Mitsubishi Electric & Electronics USA, Inc.  
 3400 Lawrenceville Suwanee Rd.  
 Suwanee, GA 30024  
 Tele: 678-376-2900 • Fax: 800-889-9904  
 Toll Free: 800-433-4822 (##4)  
 www.mehvac.com  
 Specifications are subject to change without notice.









