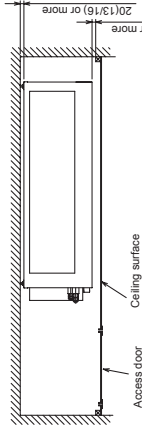
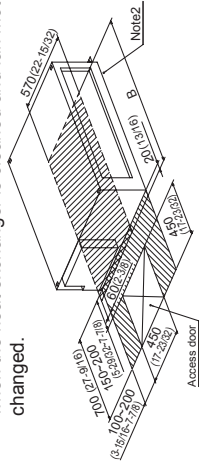


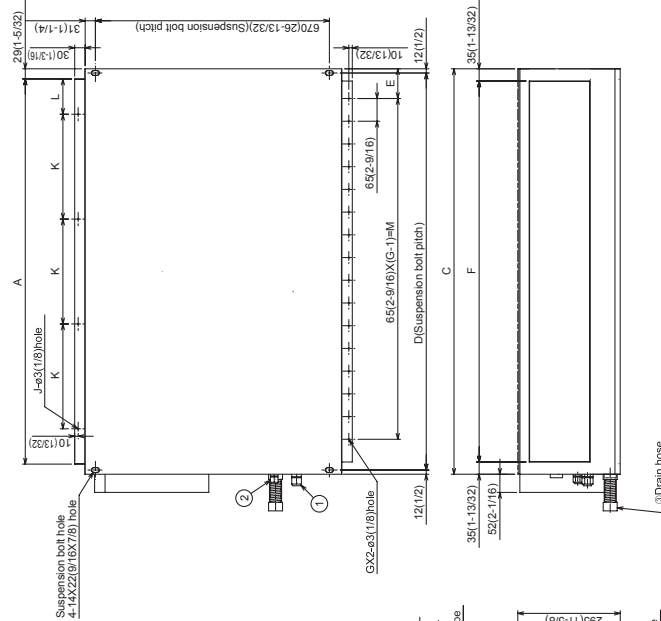
PDFY-P06,08,12,15,18,24,27,30NMU-E

Drw. : IU-W277668
Unit : mm(in)

Required space for service and maintenance.
Keep the service space for the maintenance from the bottom when the heat exchanger is cleaned and fan motor or fan is changed.

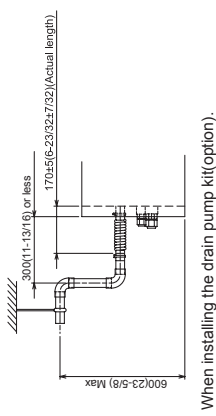


Make the access door at the appointed position properly for service maintenance.



Model	mm(in.)													
	A	B	C	D	E	F	G	J	K	L	M	① Gas pipe <flare>	② Liquid pipe <flare>	③ Drain hose
PDFY-P06-08-12NMU-E	652 (25-11/16)	750 (29-1/2)	710 (27-3/2)	686 (27-1/2)	95 (3-3/4)	636 (25-1/16)	9	3	297 (11-3/4)	156 (6-1/4)	520 (20-5/8)	ø12.7(1/2)	ø6.35(1/4)	
PDFY-P15NMU-E	902 (35-7/32)	1000 (39-3/8)	960 (37-3/8)	936 (36-7/8)	90 (3-9/16)	886 (34-29/32)	13	3	300 (11-13/16)	151 (6-3/16)	780 (30-23/32)	ø12.7(1/2)	ø6.35(1/4)	Drain hose 32mm(1-1/4inch) <flexible joint > (accessory)
PDFY-P18NMU-E	902 (35-7/32)	1000 (39-3/8)	960 (37-3/8)	936 (36-7/8)	90 (3-9/16)	886 (34-29/32)	13	3	300 (11-13/16)	151 (6-3/16)	780 (30-23/32)	ø12.7(1/2)	ø6.35(1/4)	
PDFY-P24-27-30NMU-E	1102 (43-3/32)	1200 (47-1/4)	1160 (45-11/16)	1136 (44-3/4)	92.5 (3-25/32)	1086 (42-25/32)	16	4	300 (11-13/16)	101 (3-3/4)	975 (38-3/4)	ø15.88(5/8)	ø9.52(3/8)	

Note:1. Use M10 screw for the Suspension bolt (field supply).
2. On Model :18, you would use flare nut packed with the Indoor Unit, when connecting the Outdoor Unit for R22.



When installing the drain pump kit(option).

